

**Material Transfer Agreement Triage**  
**(SOM only)**

*Last updated:*  
09/19/2025

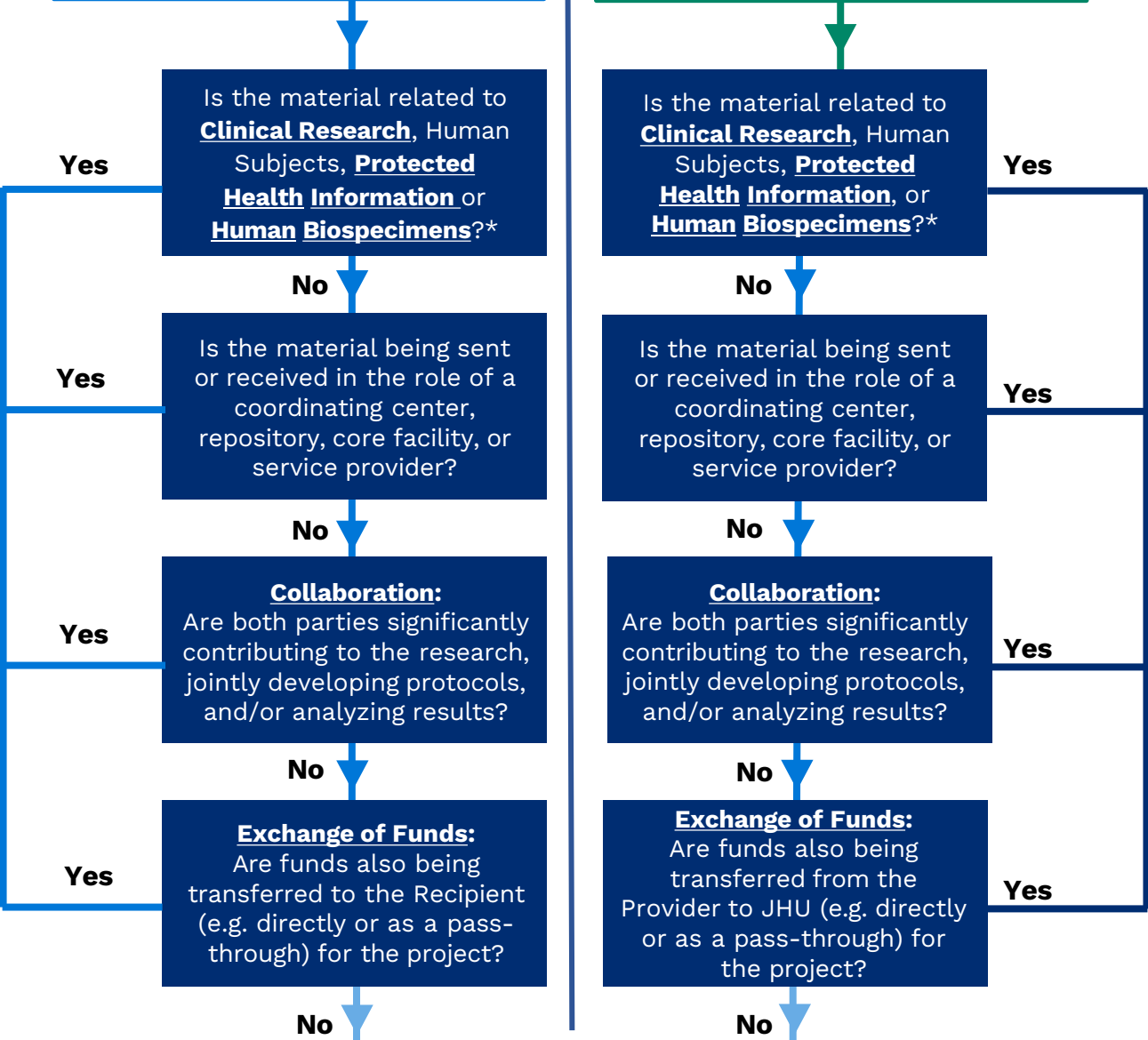
The outside entity is  
**Non-Commercial/Non-Profit**

The outside entity is  
**Commercial/For-Profit**

**Office of Research  
Administration (ORA)**

**Office of Clinical  
Trials (OCT)**

**Johns Hopkins Technology Ventures (JHTV)**



**\* CLINICAL RESEARCH** includes all research that involves patients, Protected Health Information (PHI), clinical testing or procedures, drug or device trials, or planning of clinical/lab services in support of clinical research.